



## Japanese greetings



Since every time my boss says, "Gokurosama" (You did a good job today), I say "Gokurosamadesu." However, I heard it is wrong to say that to my boss. Tell me what I should have said.

Greetings are very important, aren't they? However "Gokurosama" is not an appropriate phrase to use for your boss or senior coworkers. Instead, you should say "Otsukaresamadesu" (Thank you for your hard work). Today let's learn about Japanese greetings.



①

### 【At Japanese class】

"That's all for today.

Otsu kare sama deshita."

"Otsukare samadeshita."



Hold on! This phrase is not appropriate to use for a teacher. Instead, you should say "Arigato gozaimashita," meaning, "Thank you."

### 【At the office】



"Otsukare samadeshita."



Hold on! When you leave work earlier than your boss, you should say "Osakini shitsurei shimasu," meaning, "Pardon me for leaving earlier than you." When your boss leaves earlier than you, you should say "Otsukaresamadesita."

②

Now, let's learn how to bow in Japanese style, "ojigi." There are three levels of ojigi. You can choose the level based on occasion and the relation to the person you do ojigi.



#### Level 1: *Eshaku* (light bow)

- Tilt your upper body forward to about a 15 degree angle.
- Make light bows when you greet people in passing on the street or in a hallway.

#### Level 2: *Keirei* (formal bow)

- Tilt your upper body forward to about a 30 degree angle.
- Make formal bows when you greet someone you meet for the first time, customers, or your boss.

#### Level 3: *Saikeirei* (deep bow to show the highest respect)

- Tilt your upper body forward to about a 45 degree angle and put your hands on your lap.
- Make deep bows when you apologize or express deep appreciation.

Eshaku (15°)

Keirei (30°)

Saikeirei (45°)



③

I totally understand Japanese greetings. I've also learned how to properly use the phrase "otsukare-sama!" I'll use this phrase at my workplace the right away.



The fiscal year starts in April. Let's start by exchanging greetings to make people feel comfortable.



④

## Temporary Welfare Benefit (Economic Measure) Information



### Temporary Welfare Benefit

This benefit is provided to people with a low income in order to reduce the impact of the increased consumption tax. People that may be eligible to receive it were sent an application form via post on February 28. After applying, the benefit will be wired to your bank account.



#### Temporary Welfare Benefit (economic measure)

##### ◇Eligible persons:

- Persons who have a residence certificate for Utsunomiya City as of January 1, 2016
- Persons who were not subject to the 2016 fiscal year citizen's tax

(However, persons who are being supported by someone who was subject to the 2016 fiscal year citizen's tax, or persons who are receiving welfare are not eligible.)

##### ◇Amount: 15,000yen per person (1 time only)

#### ◎Application period:

March 1 (Wed) – July 31 (Mon)

#### ◎Application method:

- Apply via postal mail
- Apply at the window: City Hall, 1F Shimin Hall (3/1 - 3/17) or 16F Jisshi Honbu (3/21 - 7/31), regional Jichi Centers, Chiku Shimin Centers, and branch offices (Kamikawachi, Kunimoto, Tomiya, Shinoi are until 3/10, and all others until 3/22)

<Inquiries> Rinji Fukushi Kyufukin Jisshi Honbu  
(Temporary Welfare Benefit Headquarters)  
028-632-5172

#### Q&A

Q: If I have applied for the benefit in the past, can I receive the benefit this time without applying?

A: No, you must apply again to receive it.

Q: Is it possible to receive the benefit even without a bank account?

A: Yes, you can receive it. Persons without a bank account can receive the benefit in cash.

※However, you can't receive the cash on the day you apply. Please go to the city hall at the specified day and time notated on the notice of approval for payment.

## Income certificate and taxation certificate issuance at convenience stores begins

Starting March 2017, income certificates and taxation certificates will also be issued at convenience stores. Please read the explanation and use the touch panel on a "Kiosk terminal (multi copy machine)" located at a convenience store, such as Seven Eleven, Lawson, Family Mart, Circle K Sunkus, Mini Stop, etc.

◇Hours: 6:30AM – 11:00PM (Excluding year-end/new year holiday and maintenance times)

◇Necessary document: My Number card (Individual no. card)

◇Service fee: 200 yen per page

Note: • In some cases certificates cannot be issued a convenience store, such as for persons who have not made a declaration, etc.

• The certificates that can be issued at a convenience store are only those of the present fiscal year. Children's allowance certificates cannot be issued.



#### <Inquiries>

◇Taxation certificates  
Kazei-ka, Shozeishoumei Group  
(Taxation Division,  
Tax Certification Group)  
028-632-2187

◇My Number card  
Shimin-ka, Kojin Bango Group  
(Citizen's Division,  
Individual Number Group)  
028-632-5266

## 🎵 International Exchange Salon

- 🕒 4<sup>th</sup> Sunday of every month  
4:00PM – 6:00PM  
Mar. 26 World quiz
- 😊 An event at which you can talk with people from various countries. Families welcome!

**Cost** Free

- @ Utsunomiya International Plaza (UIP)
- ☎ UIP  
028-616-1563



## Kamagawa Riverbed Cherry Blossom Festival

- 🕒 April 1 (Sat) – April 16 (Sun)  
Paper lantern time 6:00PM – 10:00PM
- 😊 Riverbed access & paper lanterns lit up  
Enjoy weeping cherry trees from the riverbed

- Seats** 82 seats 1 group at a time for about 2 hours, then switch groups
- @ From Kamagawa River bank Bokusuitei to Izumobashi Bridge  
5-1-1 Chuo, Utsunomiya-shi vicinity
- ☎ Utsunomiya Machizukuri Suishin Kiko  
028-632-8215



## Spring Break Japanese Language Classes

- 🕒 March 27 (Mon) – April 6 (Thurs) 10:00AM – 12:00PM  
Total of 10 times, excluding Sunday (3/27 · 28 · 29 · 30 · 31、4/1 · 3 · 4 · 5 · 6)
- 😊 Japanese language classes for children with an international background requiring Japanese language support

**Cost** Free

- Sign up** Please sign up by calling or sending a FAX or e-mail to UCIA with the following information:  
Student's name, address, guardian's telephone no., school name, year in school, nationality
- @ Utsunomiya Omotesando Square 6F Multipurpose Hall 1 & 2
- ☎ Utsunomiya City International Association 028-616-1870 FAX: 028-616-1871
- ✉ ucia@ucia.or.jp



## Utsunomiya Street Performance Festival

- 🕒 March 18 (Sat) – 19 (Sun)  
11:00AM – 5:00PM
- 😊 Balloon art by street performers, make up booth, food & beverage booths

Please refer to the homepage for details:  
<http://www.utsunomiya-daidogei.com/jp/>

- @ Orion Square  
Tobu Department Store 6F Outdoor Area  
Various places along Orion Street
- ☎ Utsunomiya Daidogei Festival Jikkoiinkai (Utsunomiya Street Performance Festival Organizing Committee) 028-634-1722



## Spring Cultural Property Tour

- 🕒 April 9 (Sun) 9:00AM – 2:00PM Rain or shine
- 😊 City Hall (meeting place) – Akamon cherry blossoms – Shoun Temple weeping cherry blossoms – Hachiman Yama camphor tree – Romantic Village (lunch) – Shiroyama-nishi Elementary School koshi cherry blossoms – Asahi-cho large ginkgo (observe from inside car) – City Hall (finish)

**For** People living in Utsunomiya City  
Max: 40 people selected by drawing lots

**Sign up** Put the following information on a reply-paid postcard: "Haru Bunkazai Meguri" and all of the participants' addresses, names, ages, and telephone no., noting the representative's name, address, and postal code on the return side. Submit by March 13 to: Bunka-ka, Utsunomiya Shiyakusho, Utsunomiya-shi, 320-8540. Up to 4 people in 1 group. Only 1 application per group.

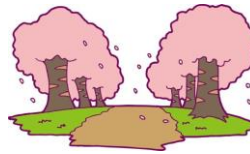


If you are interested in studying Japanese, come study with us!

Venue	Day	Time	Level	Cost
Utsunomiya International Plaza (UIP)	Sun	10:00AM - 12:00PM	Junior high & high school students	4 times 1,000 yen
	Mon	1:30PM - 5:30PM ※Must sign up	Beginner - advanced	1 hr 150 yen
	Tues	1:30PM - 3:30PM ※Must sign up	Advanced	Each course 1 month 1,000 yen
	Wed	10:00AM - 12:00PM	Beginner - Intermediate	
		1:30PM - 3:30PM		
Sat	1:30PM - 3:30PM			
Sutagawa Chiku Shimin Center	Tues	10:00AM - 12:00PM		
		6:30PM - 8:30PM		
Sogo Fukushi Center	Thurs	6:00PM - 8:00PM		
Kita Shogaigakushu Center	Sat	6:30PM - 8:30PM		

Inquiries: Utsunomiya City International Association (UCIA) ☎ 028-616-1870 Email [ucia@ucia.or.jp](mailto:ucia@ucia.or.jp)

## Utsunomiya International Plaza (UIP) Services



### Consultation for Foreign Residents

		Spanish Portuguese	Chinese	Thai	English
UIP ☎028-616-1564	3:00PM-6:00PM	Mon	Tues	Wed	Fri
	4 <sup>th</sup> Sunday of month (appointment needed)				
City Hall ☎028-632-2834 (during office hours)	9:00AM-12:00PM	Thurs	2 <sup>nd</sup> Thurs	—	—
	2:00PM-5:00PM	Thurs	—	2 <sup>nd</sup> Thurs	2 <sup>nd</sup> Thurs
Administrative Scrivener ☎028-616-1564	3:00PM-5:00PM	3 <sup>rd</sup> Monday (appointment needed)			

### Interpreter Volunteer Service

Go with someone needing language assistance to such places as national and prefectural facilities and the city hall and interpret for them.

- ▶ Monday – Saturday  
9:00AM - 5:00PM
- ▶ 1 time (2 hrs) 2,000 yen
- ▶ Please fill out an application form at UIP, pay the fee, and apply.

“Oh-i!” is published in easy Japanese, English, Chinese, Portuguese, and Thai, and is also available on the UCIA website. <http://www.ucia.or.jp>  
There you can enjoy reading past issues of the “Oh-i!” too.

Clip art on page 1 provided by: Yurika Usui & Natsuki Nemoto