

Contents: Page 2: "Baby Stations" & Preventing Food Poisoning at Home
 Page 3: African Music Concert, Waste Reduction Challenge, UCIA 20th Anniversary Commemorative Event
 Page 4: City swimming pools, Consultation for Foreign Residents, etc.

What is the Residents' Tax?

Part 1



I received a tax notice in the mail from Utsunomiya City, but what exactly does it mean?

It's notification asking you to pay the municipal and prefectural taxes. Both those taxes are together referred to as the "Residents' Tax."



<Tax notice>

①

- <<How to pay the residents' tax>>
- (1) The residents' tax is deducted from your salary (This is called "**special collection**")
 Persons working at a company have the residents' tax deducted from their salary each month from June to May of the following year, and the money is paid to the City Hall.
 - (2) Pay on your own (This is called "**normal collection**")
 - Payment method: You pay using the payment slips sent to you 4 times in June, August, October, and January.
 - Payment period: By the last day of each month (This is notated on the payment slips, so please be sure to confirm.)
 - Payment location: City Hall, bank, convenience store, etc.

※※ Please note ※※

If you do not pay by the designated deadline, then you will have to pay an expensive late fee. In addition, in some cases an Immigration Office examination will require proof of residents' tax payment.



The residents' tax is to be paid to the municipality that one is living in on January 1 of that year, and the previous year's income amount is taxed.

The money paid for this tax is used for such administrative services as childcare facilities, facilities for the elderly, elementary and junior high school maintenance, garbage collection, firefighting, emergency medical response, and welfare.

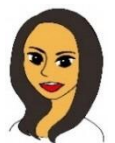


②

If there is a problem and you are unable to pay within the designated period, please consult with the Tax Division at the City Hall as soon as possible!

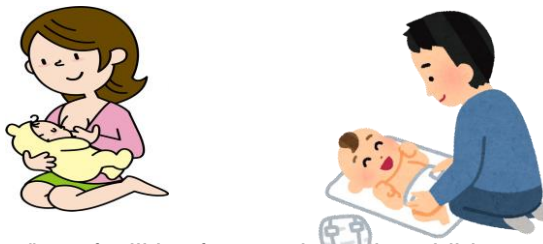


If there is something you don't understand, please contact the following Tax Division.



Inquiries: Utsunomiya City Hall Nozei-ka (Tax Division) ☎ 028-632-2226

③



"Baby Stations" are facilities for people raising children to stop by to nurse their children or change diapers when they are out and about. There are presently 234 of these facilities, identified by such flags and stickers as shown on the right. The hours each facility can be used and the services available differ depending on the location, so please be sure to confirm prior to use.

Please refer to the Utsunomiya City website or "Miyakko Kosodate Ouen Navi" ("Miya Child Rearing Support Navi") for information on the facilities. <http://www.miyakosodate.jp>

Inquiries: Kodomo Mirai-ka (Children's Future Division)

☎ 028-632-2342



< Baby Station signs >

6 points to prevent food poisoning at home

Point ① Buying food

- Check the expiration date
- Wrap meat and fish separately



Point ② Food storage

- Promptly put food in your refrigerator after coming home
- Set your refrigerator at 10°C or lower
- Set your freezer at -15°C or lower
- Wrap meat and fish so that no liquid comes out



Point ③ Cooking preparation

- Wash your hands frequently
- Throw away scraps frequently
- Thaw out frozen food in your refrigerator
- After cutting meat or fish, wash the cutting board and knife and pour hot water on them



Point ④ Cooking

- Heat thoroughly
- If you stop preparing food part way, put it in your refrigerator
- When using a microwave, heat the food all the way through



Point ⑤ Eating

- Wash your hands before eating
- Use clean dishes
- Don't leave out at room temperature for a long time



Point ⑥ Left over food

- If too much time has gone by or if there is even a slight odor or strange appearance, throw the food away
- Spread out the food so it can cool quickly
- When reheating, be sure to thoroughly heat



Fun events 🎵 🎶

African Music Concert

- 🕒 August 20 (Sun) 1:30PM - 3:15PM
1:00PM Doors open
- 😊 African music concert by the Mukuna Band
- For** Ages 1 and older
- Max** First 300 people
- 📞 Sign up Call, fax, or e-mail UCIA
- 💰 Cost Free
- @ Higashi Shimin Katsudo Center "Hall"
(East Citizen's Activity Center "Hall")
- 📞 Utsunomiya City International Association
028-616-1870
FAX 028-616-1871
✉ ucia@ucia.or.jp



Waste Reduction Challenge 2017

- 🕒 August 19 (Sat) 10:00AM - 3:00PM
- 😊
 - Make crafts using commonly discarded items!!
 - Catch crayfish!!
 - Visit Clean Park Mobar!!
 - Meiji Area Brass Band "Meiji" performance!
 - Vegetables, handmade bread, shaved ice, etc.
- ~Lots of fun!~♪
- @ Utsunomiya-shi Kankyo Gakushu Center
(Utsunomiya City Environmental Learning Center)
- 📞 028-655-6030



UCIA 20th Year Commemorative Event

- 🕒 September 30 (Sat) 10:00AM – 3:00PM
- 😊 < UCIA Establishment 20th Year Commemorative Event >
 - International exchange booths, foreign resident speeches, music and dancing from around the world on a stage
 - Children's games from around the world, listen to picture books from around the world being read aloud
 - Stamp rally, try on yukatas, etc.
- Cost** Free
- @ Banba Hiroba & Utsunomiya Shimin Plaza 5F, etc.
- 📞 Utsunomiya City International Association
028-616-1870



Mizuho Summer Festival

- 🕒 August 19 (Sat) 2:00PM – 8:00PM
Held on August 20 (Sun) if it rains.
- 😊
 - Catch ayu fish
 - Play basketball
 - Japanese drumming, Yosakoi dancing, karate performance, etc.
 - Fireworks
- @ Mizuho no Shizen no Mori Koen
- 📞 Mizuho no Shizen no Mori Koen
Kanri Jimukyoku (Office) 028-657-5222



International Exchange Salon

- 🕒 Every 4th Saturday 4:00PM – 6:00PM
- Aug. 26 World quiz
- Sept. 23 Halloween decorations
- 😊 An event at which you can talk with people from various countries
- Cost** Free
- @ Utsunomiya International Plaza
- 📞 028-616-1563



Information

It's summer! Go to the pool!

【Eki Higashi Koen Pool】・【Yonan Pool】

Period	July 1 – August 31
Time	9:00AM - 4:45PM
Fee	Adults: 340 yen, Junior high school students and Younger: 160 yen (Per visit per person)
Inquiries	Ekihigashi Koen Pool ☎ 028-661-5310 Yonan Pool ☎ 028-658-5813



【Dream Pool Kawachi】

Open	Tuesday – Saturday: 10:00AM - 9:00PM Sunday & national holidays: 10:00AM - 6:00PM
Closed	Monday (Open every day from July 20 – August 31), year-end and start of new year ※If Monday is a national holiday, then it will be closed the next following weekday.
Fee	〈2 hours〉 Adults & high school students: 510yen, elementary & junior high school students & people age 65 or older: 250yen ※If 2 hours or longer, then 200 yen per 1 hour for high school students and adults, and 100 yen per hour for elementary & junior high school students & people age 65 or older.
Inquiries	☎ 028-673-0212

Children high school age and younger attending school in, or living in, Utsunomiya City may go to the swimming pool for free by showing their student ID card or Miyakko Chikai Card!



Utsunomiya International Plaza (UIP)



Consultation for Foreign Residents

		Spanish Portuguese	Chinese	Thai	English
UIP ☎028-616-1564	3:00PM-6:00PM	Mon	Tues	Wed	Fri
		4 th Sunday of month (appointment needed)			
City Hall ☎028-632-2834 (during office hours)	9:00AM-12:00PM	Thurs	2 nd Thurs	—	—
	2:00PM-5:00PM	Thurs	—	2 nd Thurs	2 nd Thurs
Administrative Scrivener ☎028-616-1564	3:00PM-5:00PM	3 rd Monday (appointment needed)			

Interpreter Volunteer Service

Go with someone needing language assistance to such places as national and prefectural facilities and the city hall and interpret for them.

- ▶ Monday – Sunday
8:30AM - 7:00PM
- ▶ 1 time (2 hrs) 2,000 yen
- ▶ Please fill out an application form at UIP, pay the fee, and apply.

“Oh-ii!” is published in easy Japanese, English, Chinese, Portuguese, and Thai, and is also available on the UCIA website. <http://www.ucia.or.jp>
There you can enjoy reading past issues of the “Oh-ii!” too.

Clip art on page 1 provided by: Yurika Usui & Natsuki Nemoto