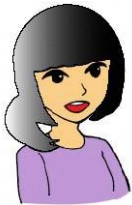




**Contents** Page 2: Prevent the Coronavirus (COVID-19), a Message from Chief Manager of UCIA  
Page 3: Have fun with Children at Home, Reduce garbage, etc.  
Page 4: Utsunomiya City Forest Park, etc

## Go to Oya and see historic stone sites!



In Utsunomiya City there is a town called Oya, which is famous for its stones. Oya's stone culture was certified as the Japanese heritage "Discover an underground adventure, Utsunomiya, home of the Oya stone," in May 2018. In Oya, where Oya stone has been mined since ancient times, you can see temples, a Kannon-stature, and huge Oya stone boulders. Recently, there are cafes and more visitors are coming. I would like to tell you about a sightseeing course in Oya.

To get to Oya, take the Kanto bus bound for "Tateiwa" from JR Utsunomiya Station West Exit Platform 6, and arrive at "Oya Kannon Mae" in about 30 minutes. (Price: Adult 460 yen) When you go by car, you can use the municipal Oya parking lot free of charge.

### ① Tengu's throwing stone



○After a 3 minutes' walk once getting off the bus, you can see a legendary stone that Tengu, an imaginary hobgoblin, threw up on a cliff.

### ② Heiwa Kannon-stature



○This is a 27-meter-high Kannon-stature made by carving natural stone walls by hand. It was completed in 1954 to pray for world peace with those who died in the war.

### ③ Parent & child frogs



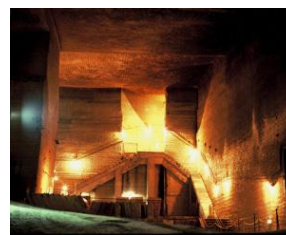
○It is said that a long time ago, when a large bee army attacked Oya, "a set of parent and child frogs" appeared and protected the inhabitants.

### ④ Oyaji-temple & Oya Kannon-stature



○It is said that Oyaji Temple was built by Kobo Daishi, a great Buddhist monk in 810, and the "Oya Kannon (Senzyu Kannon standing stone statue)" of Oyaji's principal image was set up in the early Heian period (794-1185). (Worship fee: 500 yen for adults)

### ⑤ Oya History Museum



○ Underground there are about 20,000 square meters of Oya quarry trace, which is 60m at deepest, and the average temperature is 8 degrees C. There is a magical atmosphere with appeal. It is used as a venue for theaters and concerts because it sounds like an ancient Roman temple and has good acoustics. (Admission fee: 800 yen for adults)

### ⑥ Oya Scenic Park



○This is a park where you can see rare landscape with Oya stone walls. It is located south of the stones, along the Sugatagawa River. You can enjoy the beautiful rocks of Otomeyama (Mt.Otome)

※④ and ⑤ may be closed temporarily, so please check before you go.



## Prevent the Coronavirus (COVID-19)!

It is very important to always wash your hands and wear a mask to prevent coronavirus infection.

Be especially careful where there is poor ventilation, and people are gathered and talking.

It is also important that each person tries to be healthy.

Eat enough, sleep well, and exercise moderately.

If you feel unwell, don't go out. Take your temperature every day.



### Please consult someone when you have following symptoms

- ▽ Cold symptoms and a fever of 37.5 degrees or more continue for 4 days or more.
- ▽ You have very low energy and it is hard to breathe.\*
- ※ About 2 days when the above-mentioned symptoms continue for elderly people, pregnant women, people with respiratory illness, etc.

### Returnee & Contact Person Consultation Center (Public Health Center Health Prevention Division)

-Weekdays 8:30AM - 5:15PM ☎ 028-626-1114

-Emergency contact at night, Saturdays, Sundays and holidays ☎ 028-626-1135

#### Hotline

-24 hours a day ☎ 028-678-8282

-18 languages, three-way calling

[Message from Chief manager of UCIA]



～ Let's work hard together to prevent coronavirus ～

Chief manager of NPO Utsunomiya City International Association, Yoshiko Usui

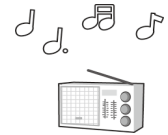
Who could have imagined this situation after three months from first hearing the news about the coronavirus? What we can do now is ～Stay Home! ～ This is an opportunity to make minimal contact with the society and to keep your physical and mental health, to do things you can't usually do without killing much of time, and to reconsider the meaning of the everyday life you used to live ordinarily. There are likely some foreigners living around us who are more anxious than we are. They are people who are confused about the situation in Japan and are worried about their hometown family and friends. Please keep such people in mind. Our International Association's consultation hours are still taking place. The virus is going full force everywhere in the world. Anxiety about it is the same worldwide. The way to prevent infection, which is learned from the countries that have taken measures before an infection explosion could take place, were the result not of the regulations by the country or the government, but the awareness and responsible behavior of each citizen. I feel mutual "trust." Let's overcome this critical situation while caring for ourselves and others, so we can see each other again with a smile.

## Have fun with Children at Home ♪



### ☺ You can read picture books and children's books online for free.

- Picture book open space <https://ehon.alphapolis.co.jp/>
- Free e-fairy tales <http://www.e-douwa.com/>
- PIBO where you can read picture books for free <http://pibo.jp/>
- Fukuinkan Shoten "Back numbers of a lot of mysteries are being released for free!"  
[https://www.fukuinkan.co.jp/detail\\_contents/?id=85](https://www.fukuinkan.co.jp/detail_contents/?id=85)



### ☺ Radio programs for children focus on listening, so they can improve your listening ability. Please check it out ♪ Radio programs for children

Program	Homepage	Broadcast time
NHK Radio 2 "Ohanashi Detekoi"	<a href="https://www4.nhk.or.jp/detekoi/">https://www4.nhk.or.jp/detekoi/</a>	Every Mon, Tues, Wed 9:30AM – 9:45AM
NHK Radio 1 "Kodomo Kagaku Denwa Soudan"	<a href="https://www4.nhk.or.jp/kodomoq/">https://www4.nhk.or.jp/kodomoq/</a>	Every Sunday 10:05AM - 11:50AM



### Reduce garbage!

The city covers a portion of the purchase cost (bought amount) of household garbage processor. The maximum is 30,000 yen.



### Use the garbage sorting app, "San-Aru"

#### 1. Electric garbage processors

Subsidy: 1/2 the amount of the purchased price. Up to 30,000 yen per unit (up to 1 per family).

#### 2. Non-electric garbage processors (compost containers, etc.)

Subsidy: 1/2 amount of the purchase price.  
Up to 5,000 yen per unit (up to 3 units per family).

##### Eligible persons

Persons who meet all the following criteria

- ① Those who live in the city and have resident registration
- ② Those who bought and installed items 1 or 2 above
- ③ Those who have no delinquency in city tax

##### Other

For details on how to apply, see the city website or contact the Garbage Reduction Division ☎ 028-632-2413

##### Lots of useful functions

- ▽ **Collection day calendar:** You can see the garbage collection days (sorted collection days) in a calendar format
- ▽ **Collection date alarm:** Don't forget to take out the garbage
- ▽ **Garbage sorting dictionary:** Search for an item to see how to sort and put out
- ▽ **Languages:** English, Chinese, Korean
- ▽ **Map list for inquiries**  
Location of collection boxes for used oil, etc.

##### QR code



iPhone



Android

# Utsunomiya City Forest Park



Utsunomiya City Forest Park is an outdoor spot where you can enjoy camping, barbecues, cycling, and hiking around the Akagawa Dam. There are various flowers and trees, and you can enjoy forest bathing and nature walks.

【Address】 1074-1Fukuoka-machi, Utsunomiya City, 〒321-0342

【Contact】 ☎ 028-652-3450

【Website】 <http://forestpark-utsunomiya.jp/>

【Transportation】

- ① By car: About 40 minutes from JR Utsunomiya Station
- ② By bus: Take the bus bound for Kanuma via Arahari from JR Utsunomiya Station Platform 6 (about 30 minutes).

Get off at the stop of Sinrinkoen Iriguchi (Forest Park Entrance) and walk for about 3km



Take a walk and change your mood.

## Utsunomiya International Plaza (UIP) Service

### Consultation for Foreign Residents

(※Consultation in Vietnamese has started from April.)



		Spanish Portuguese	Vietnamese	Chinese	Thai	English
<b>UIP</b> ☎028-616-1564	3:00PM - 6:00PM	Mon	1 <sup>st</sup> & 3 <sup>rd</sup> Mon	Tues	Wed	Fri
		4 <sup>th</sup> Sunday of the month (appointment needed)				
<b>City Hall</b> ☎028-632-2834 (during office hours)	9:00AM - 12:00PM	Thurs	—	2 <sup>nd</sup> Thurs	—	—
	2:00PM - 5:00PM	Thurs	2 <sup>nd</sup> Thurs	—	1 <sup>st</sup> Thurs	3 <sup>rd</sup> Thurs
<b>Administrative Scrivener</b> ☎028-616-1564	3:00PM - 5:00PM	3 <sup>rd</sup> Monday of the month				

### Interpreter Volunteer Service

Volunteer goes with someone needing language assistance to such places as national and prefectural facilities and the city hall, and interpret for them

- ▶ Monday – Sunday 8:30AM – 7:00PM
- ▶ 1 time (2 hours) 2,000 yen
- ▶ Please fill our application form at UIP, pay the fee, and submit the application.

“Oh-i!” is published in easy Japanese, English, Chinese, Portuguese, Thai, and Vietnamese is also available On the UCIA website. <http://www.ucia.or.jp> There, you can enjoy reading past issues of the “Oh-i!” too.

Clipart on page 1 courtesy of: Yurika Usui & Natsuki Nemoto